
BRLink Instructions for driver installation

2021.4.14

V1.4

Change record

Version	Change content	Date
v1.0	Initial version	2021-02-23
v1.1	1)Modify installation considerations 2)Added requirement to shut down antivirus software 3)Increase the use of a variety of scenarios 4)Add some unsigned processing methods for prompt driver in WIN7 system	2021-03-23
v1.2	Add version change record	2021-03-31
v1.3	Modify screenshot	2021-04-07
v1.4	Add the treatment method that cannot be started after installation	2021-04-14

Catalogue

1. Introduction.....	2
2. installation operation	3
2.1. Insert bluetooth adapter (Dongle).....	3
2.2. close/exit all antivirus software	3
2.3. Driver installation.....	3
2.3.1. set the installation path.....	4
2.3.2. installation is complete(Figure 7)	5
2.3.3. Restart the system(Figure 8).....	5
2.4. Check the driver installation results	5
3. Instructions for use.....	6
3.1. Ensure that the connected device is turned on "discoverable mode"	6
3.2. Add equipment	7
3.3. Pairing equipment.....	7
3.4. Connection.....	8
3.4.1. Connect headphones/speakers	8
3.4.2. connect the classic bluetooth keyboard/mouse	9
3.4.3. Connect the Bluetooth mouse/keyboard with low power consumption	9
3.4.4. connect the mobile phone	10
3.5. Display bluetooth devices	11
4. Version description.....	12
5. Matters need attention	12
5.1. Bluetooth cannot be started after installation	12
5.2. driver installation error	13
5.3. Bluetooth icon in the lower right corner is not displayed	13
5.4. conflict between bluetooth and bluetooth adapter built in the system	14
5.5. After installing BRLink, resume using the system's own driver	15

1. Introduction

BRLink is a Bluetooth driver developed by Barry for Windows system, which supports Bluetooth music, hands-free call, Bluetooth keyboard and mouse, Bluetooth handle, file transfer and other applications. This driver supports WIN7 32-bit,

WIN7 64-bit, Win8.1, WIN10 32-bit and WIN10 64-bit operating systems, and has passed the driver certification of Microsoft. This document is used to describe the installation steps and usage of BRLink Bluetooth driver.

2. installation operation

2.1. Insert bluetooth adapter (Dongle)

In order to identify the device during installation, you need to insert the adapter first.

2.2. close/exit all antivirus software

During installation, BRLink will register the system service, which will be mistaken by anti-virus software as a risk to the system. Anti-virus software intercepts the process of registering the service, resulting in the failure of service registration and the failure of Bluetooth to start. Therefore, it is recommended to quit anti-virus software before installation. After the installation is complete, you can reopen the antivirus software.

2.3. Driver installation

Open the BRLink installation package, and click "setup.exe" in the root directory. The operation steps are as follows:

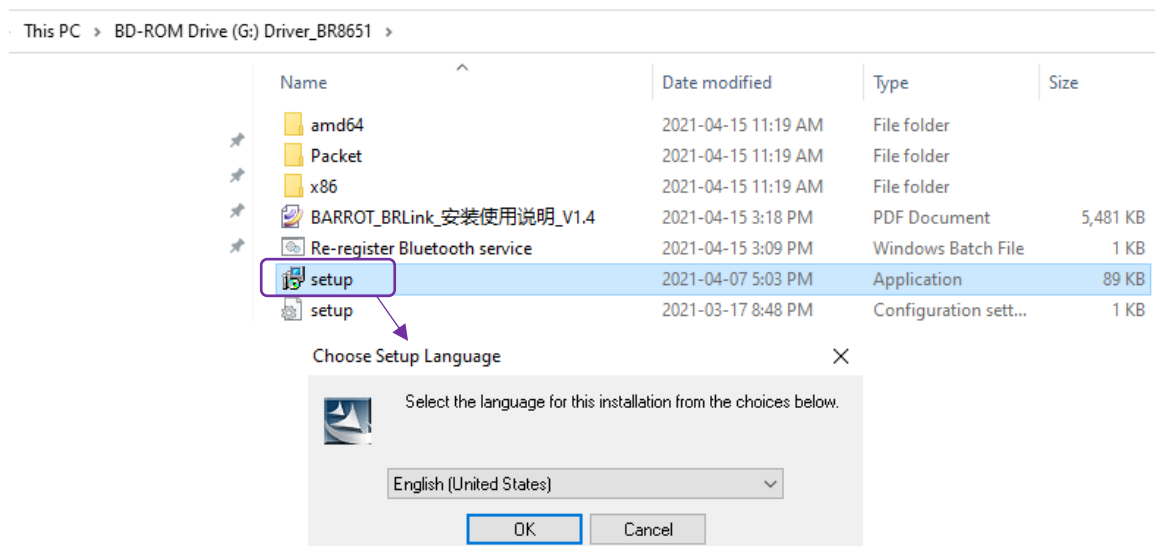


Figure 1 Selecting the language of the installer

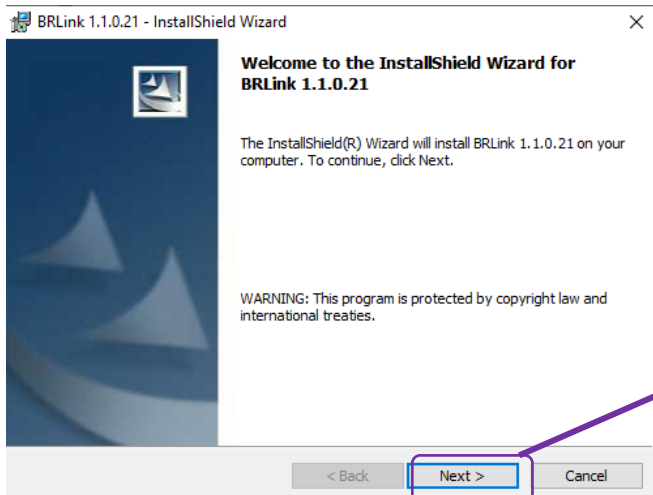


Figure 2 Prompt to continue installation



Figure 3 User Software License Agreement

2.3.1. set the installation path

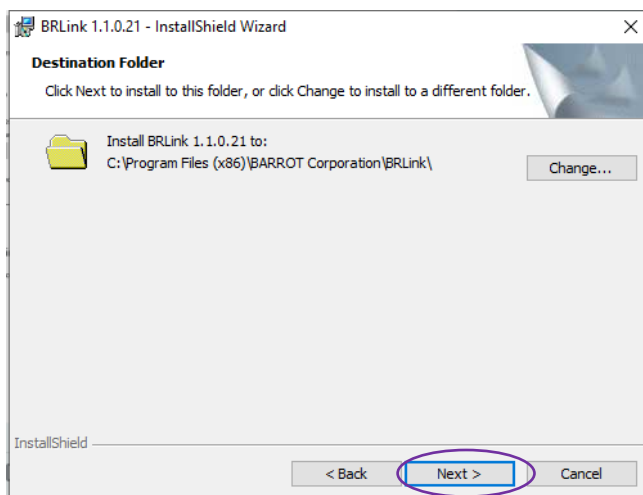


Figure 4 Installation Path Selection

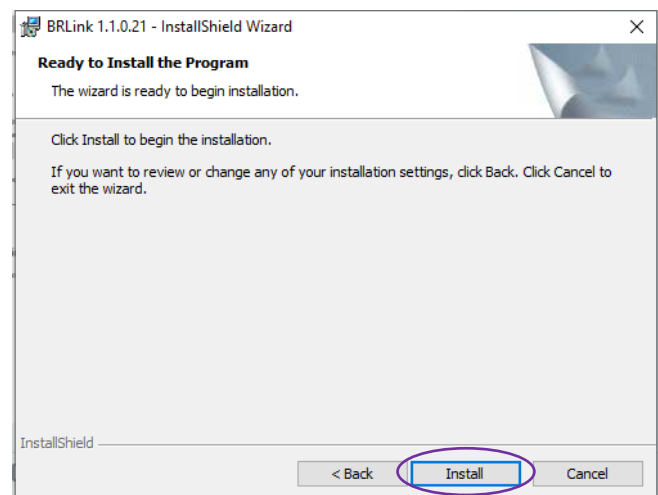


Figure 5 Preparing for installation

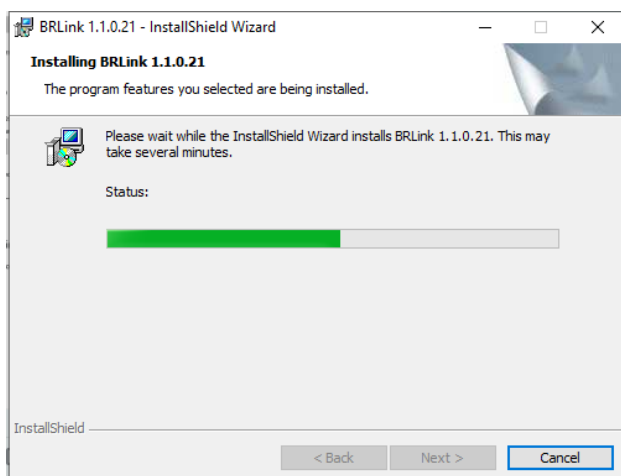


Figure 6 Installation process

2.3.2. installation is complete(Figure 7)

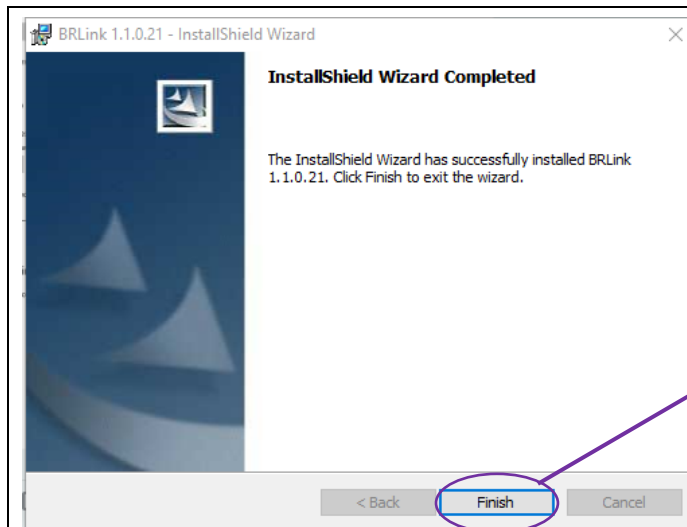


Figure 7 Successful installation

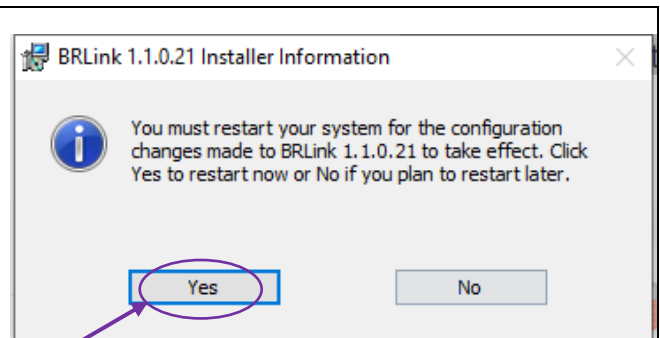


Figure 8 System restart prompt

2.3.3. Restart the system(Figure 8)

2.4. Check the driver installation results

- You can see “BRLINK Generic Bluetooth Driver” in “Device manager”

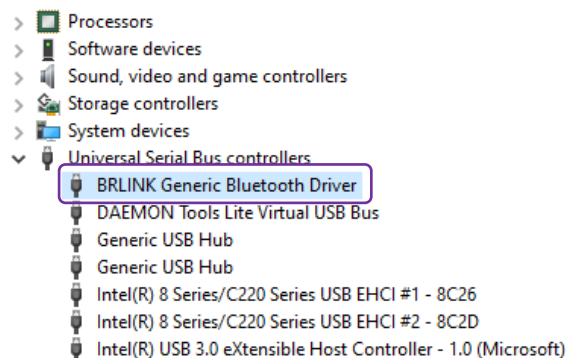


Figure 9 Insert the adapter and recognize the BRLink Bluetooth driver

- Bluetooth icon appears in the lower right corner of the computer taskbar and turns blue

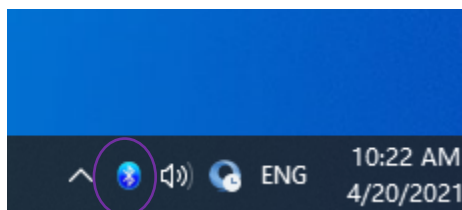


Figure 10 Bluetooth startup logo

- If it doesn't turn blue, right-click the icon and select Start Bluetooth.

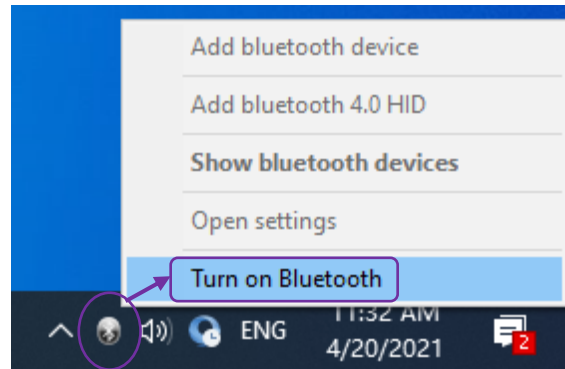


Figure 11 Manually Start Bluetooth

3. Instructions for use

3.1. Ensure that the connected device is turned on "discoverable mode"

Headphones usually press and hold the power-on button, and continue to press and hold for a few seconds after booting; The keyboard also has similar operations. Some mouse and keyboard may need to switch between 2.4G and Bluetooth modes, depending on the product description; There is a special option setting for mobile phones (some mobile phones need to open the Bluetooth setting interface), and there is a time limit, so it is necessary to use BRLink to search during this time.

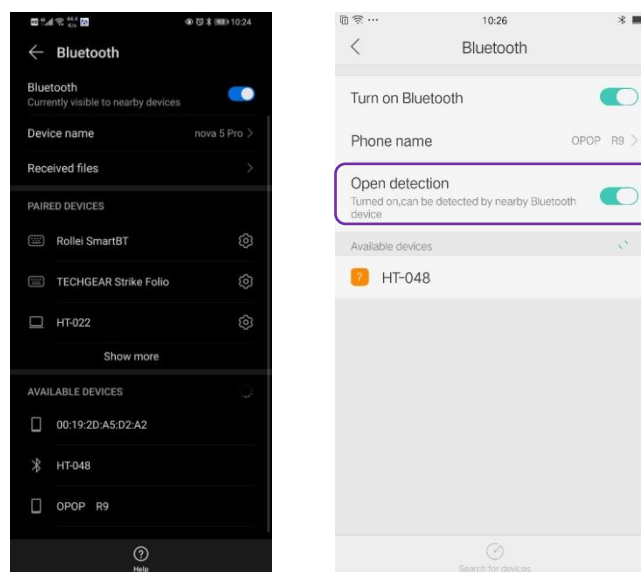


Figure 12 Mobile phone settings can be found

3.2. Add equipment

Right-click the Bluetooth icon on the desktop of the computer, the menu shown in Figure 13 appears, and click "Add bluetooth device"

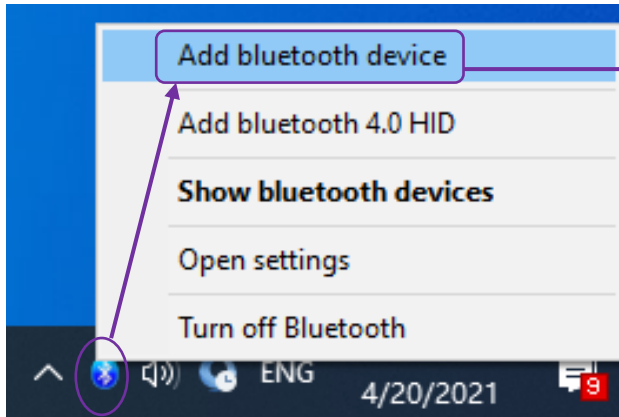


Figure 13 Menu-Add bluetooth device

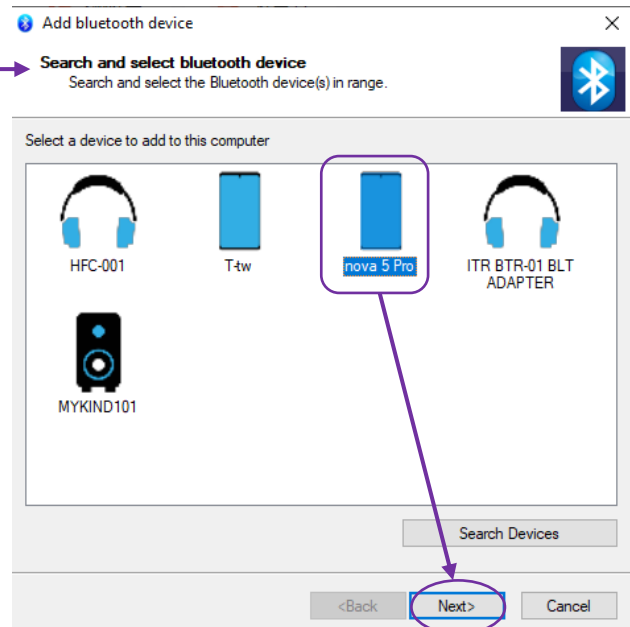


Figure 14 Search devices

If the device to be searched is not in the list, you can click "Search Devices" to search again.

3.3. Pairing equipment

After searching for the device, double-click to pair. At this time, a pairing prompt box may pop up. Just confirm. If the phone prompts, please also confirm. Some devices may need to input pairing codes, and refer to the operating instructions of the devices to be connected, such as "1234" and "0000".

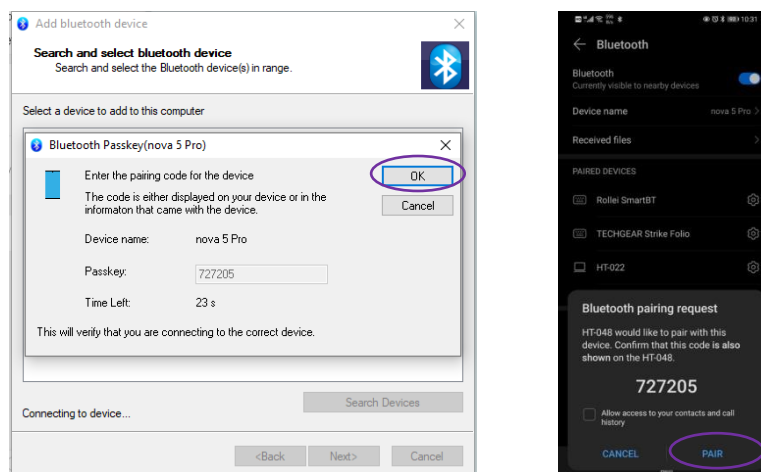


Figure 15 Pairing

After pairing is completed, the following interface will be displayed

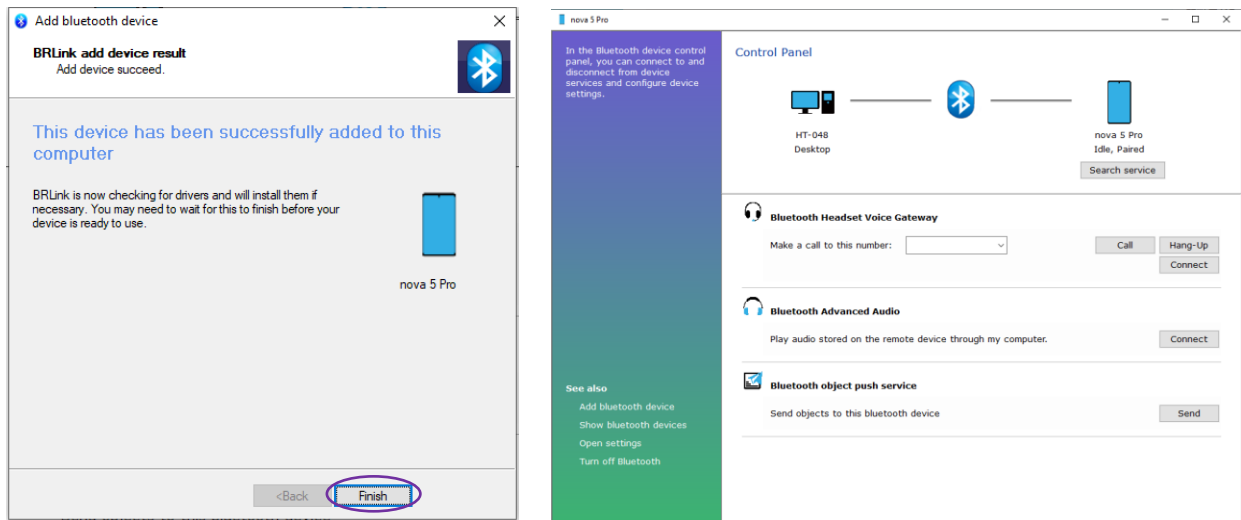


Figure 16 Successful pairing

3.4. Connection

After successful pairing, the device interface will be automatically displayed. Usually, there are the following devices, and different devices support different functions.

3.4.1. Connect headphones/speakers

Enter the device management interface, and click the "Connect" button to connect "Bluetooth Headset and Microphone" or "Bluetooth Advanced audio"

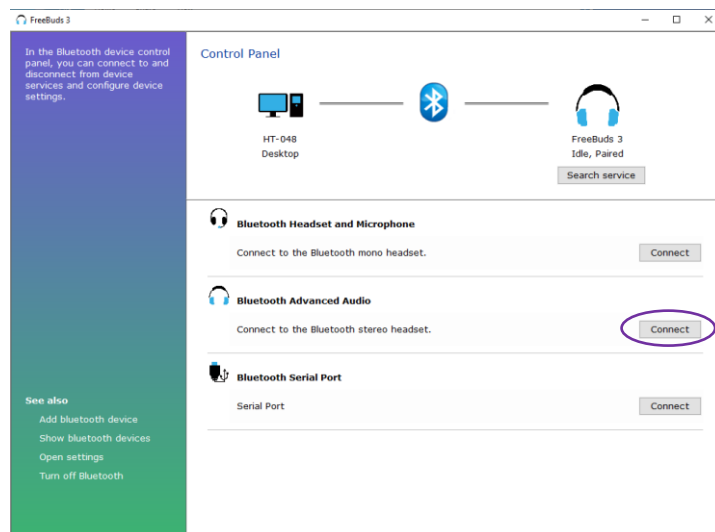


Figure 17 Connect Bluetooth mono service or Bluetooth high-quality audio service
After successful connection, you can play music or make voice calls on the headset/speaker.

3.4.2. connect the classic bluetooth keyboard/mouse

When the classic keyboard/mouse pairing is completed, the control panel pops up and shows connected

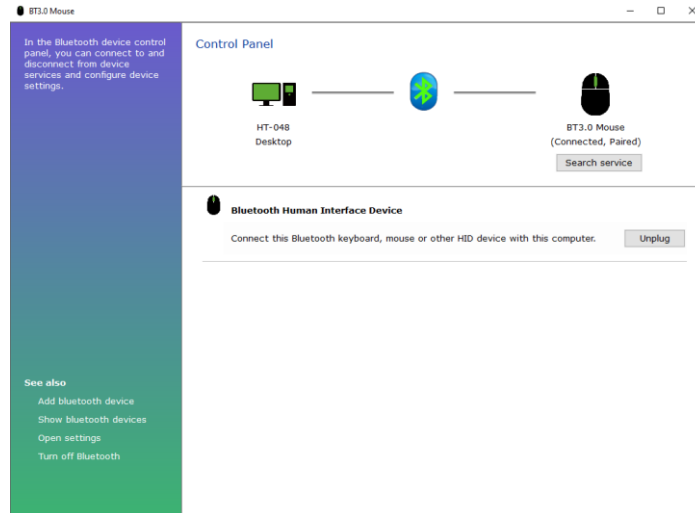


Figure 18 Classic Bluetooth mouse (keyboard) connection interface

At this time, Bluetooth mouse (keyboard) can be used normally.

3.4.3. Connect the Bluetooth mouse/keyboard with low power consumption

Right-click the Bluetooth icon and click "Add bluetooth 4.0 HID" to search and connect the target device(Figure 19)

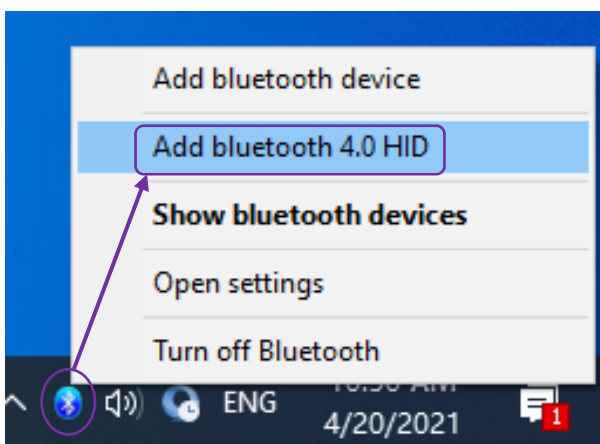


Figure 19 Menu-Add bluetooth 4.0 HID

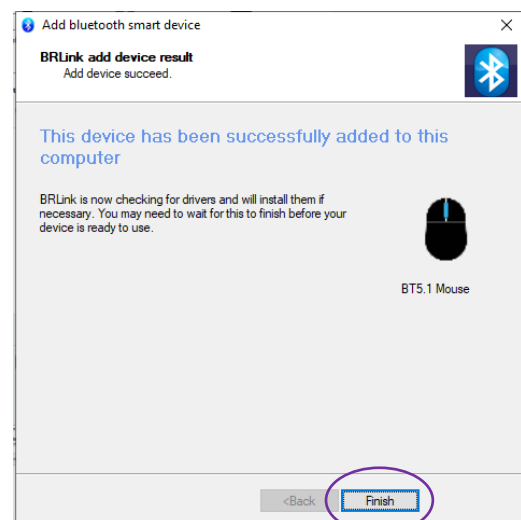


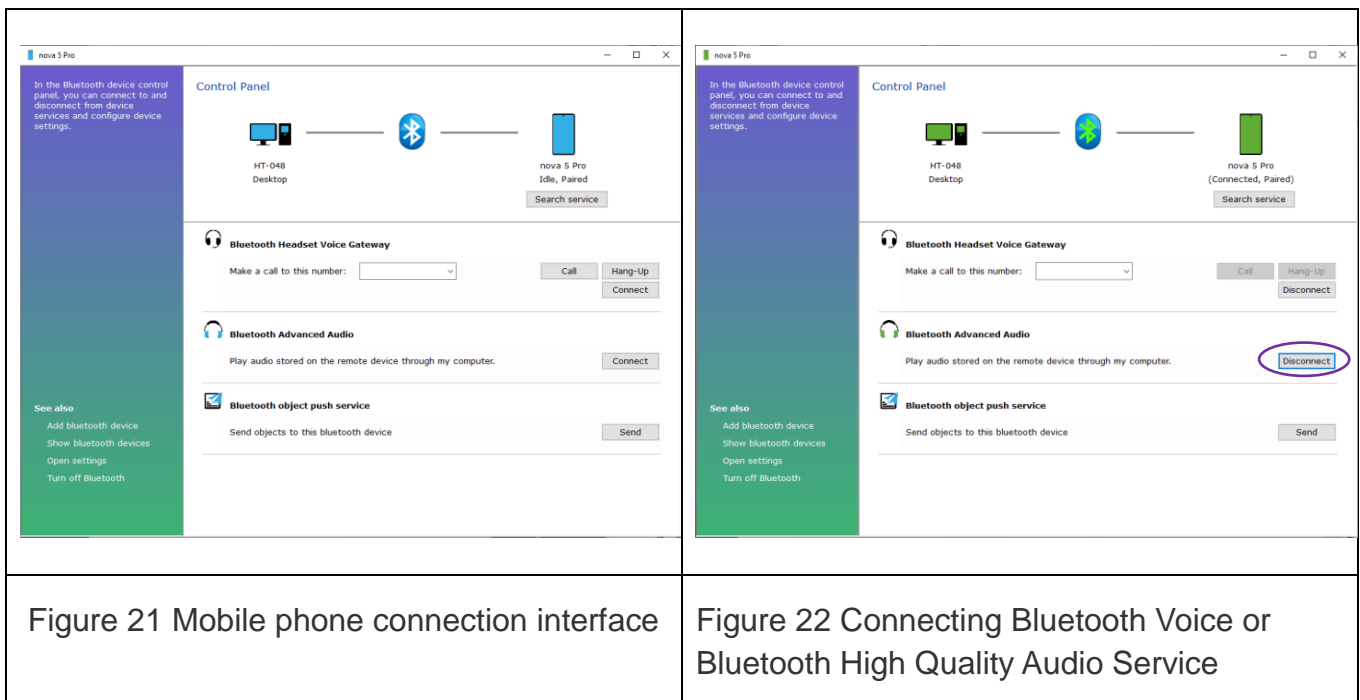
Figure 20 Successful pairing interface of low power mouse and keyboard

After the low-power keyboard/mouse pairing is completed, the following interface will be displayed(Figure 20)

At this time, the Bluetooth mouse/keyboard with low power consumption can be used normally.

3.4.4. connect the mobile phone

The mobile phone supports Bluetooth voice gateway, Bluetooth high-quality audio and Bluetooth object push. Connect with Bluetooth voice gateway, and make phone calls on the computer side; Connect Bluetooth high-quality audio, and the music on the mobile phone can be played through the sound card of the computer (if the computer does not have a sound card, this item will be grayed out); Connect Bluetooth object push and send files or photos to the mobile phone(Figure 21).



Click the "Connect" button to connect Bluetooth voice or Bluetooth high-quality audio service(Figure 22)

Click the "send" button to send files or photos to the mobile phone(Figure 23/24)

The mobile phone sends files or photos, and the computer pops up files to receive prompts(Figure 25)

After the mobile phone sends, the computer pops up the prompt of receiving (green Bluetooth icon when receiving, blue when receiving, receiving directory "This PC\Documents\Bluetooth").(Figure 26)

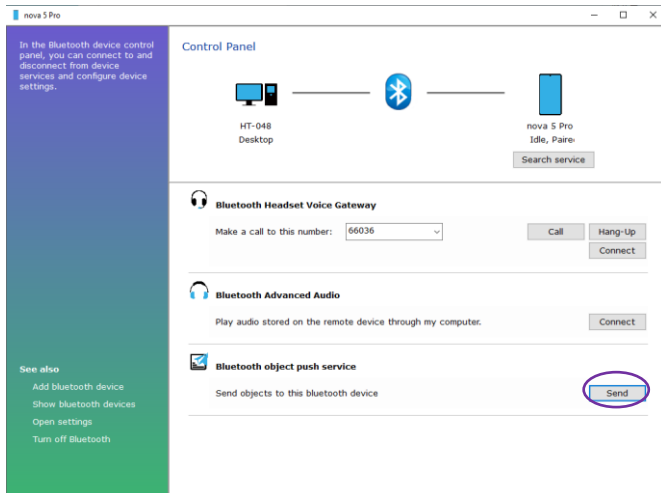


Figure 23 The computer sends files or photos to the mobile phone

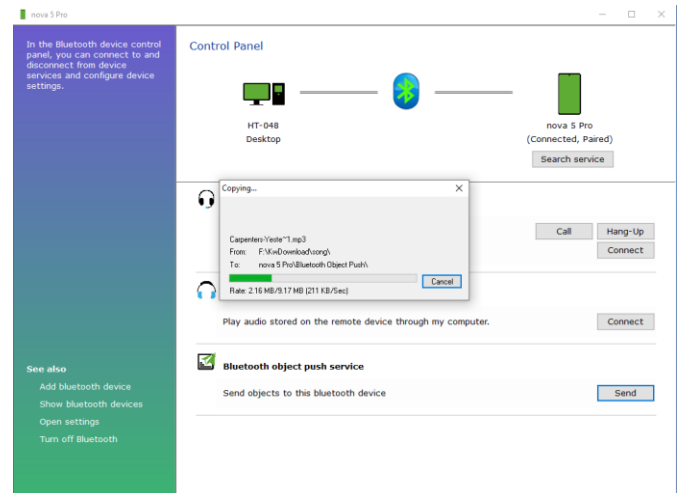


Figure 24 File/Photo Sending Process

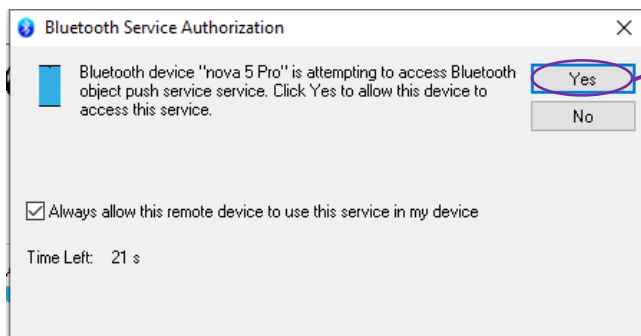


Fig. 25 File/Photo Receiving Tips

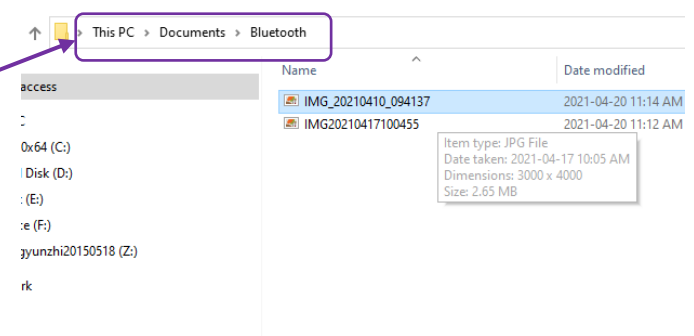


Fig. 26 file/photo receiving directory

3.5. Display bluetooth devices

Right-click the Bluetooth icon and select "Show bluetooth Devices"(Figure 27). You can see all the previously paired devices(Figure 28).

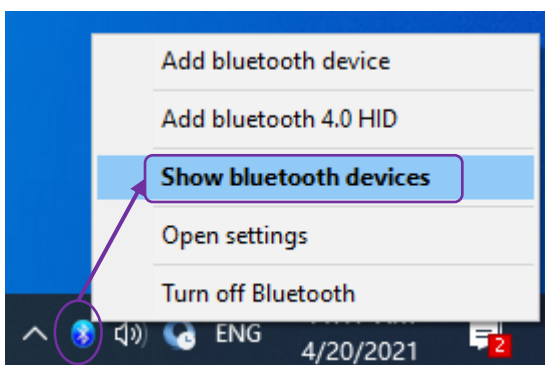


Figure 27 Menu-Show Bluetooth Device

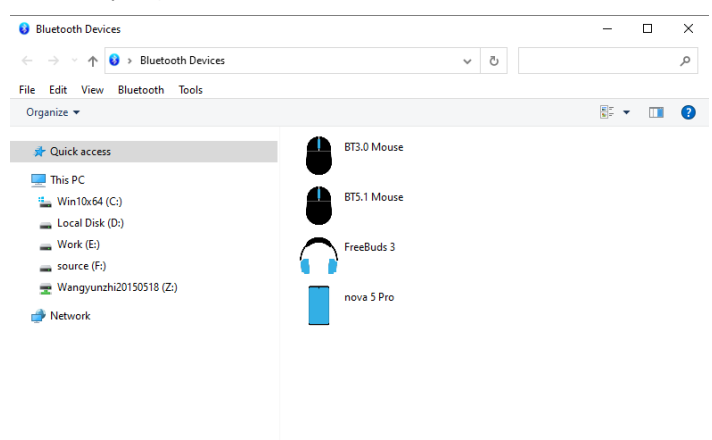


Figure 28 Bluetooth device management

Double-click one of the devices to enter the interface of a single Bluetooth device, as shown in Figure 28.

4. Version description

Version	Change record
BRLink_V_1.1.0.10	Initial version
BRLink_V_1.1.0.11	Solve the problem that some speakers play stuck
BRLink_V_1.1.0.17	1)Automatically uninstall the old version when installing 2)Solve the problem that some machines can't start after switching on and off many times 3)Solve the problem that some speakers can not be connected reversely 4)Solve the problem of failed connection of HID keyboard
BRLink_V_1.1.0.18	Solve the problem that the Bluetooth hands-free connection button is gray after a headset is connected to Bluetooth stereo
BRLink_V_1.1.0.19	Solve the problem of some mouse stuck
BRLink_V_1.1.0.20	Solve the problem that some BLE keyboard and mouse (such as Xunfei mouse) can not be searched
BRLink_V_1.1.0.21	Modify icon

5. Matters need attention

5.1. Bluetooth cannot be started after installation

If the Bluetooth icon is always gray after some computers are installed, right-click "Start Bluetooth" and it cannot turn blue. It is possible that the system prevented the driver service from starting. Run "re-register bluetoothservice.bat" as an administrator as shown in the figure below. This BAT will re-register the driver service in the system. After running, right-click the Bluetooth icon in the taskbar and select "Turn on Bluetooth".

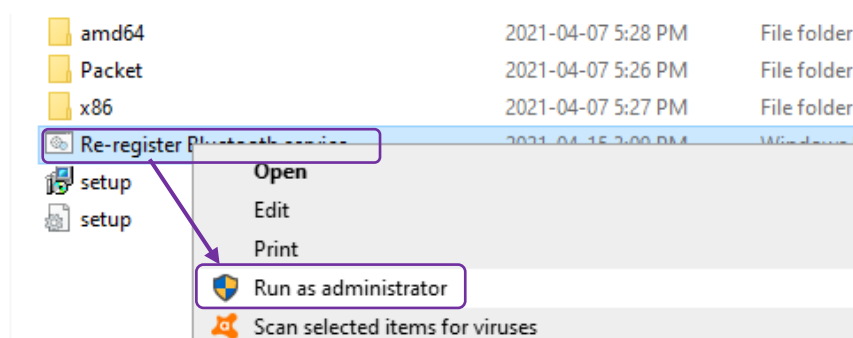


Figure 29 Select "Run as administrator"

5.2. driver installation error

If the following error occurs, it may be that the WIN7 system version is relatively old, and the system patch needs to be installed: KB3033929

<https://www.microsoft.com/en-US/download/details.aspx?id=46148>

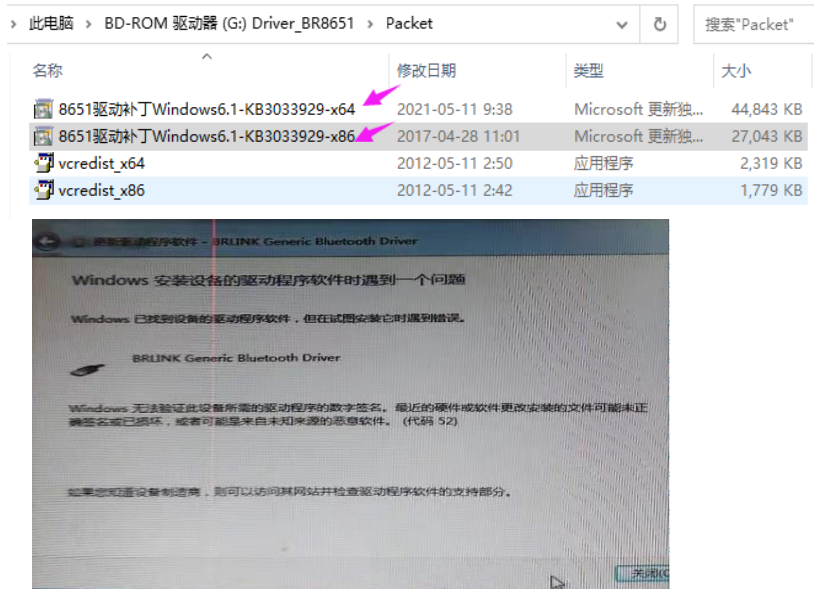


Figure 30 Driving Unsigned Prompt

5.3. Bluetooth icon in the lower right corner is not displayed

You can try the following:

- Find the installation path and open the "BARROT Corporation" folder.

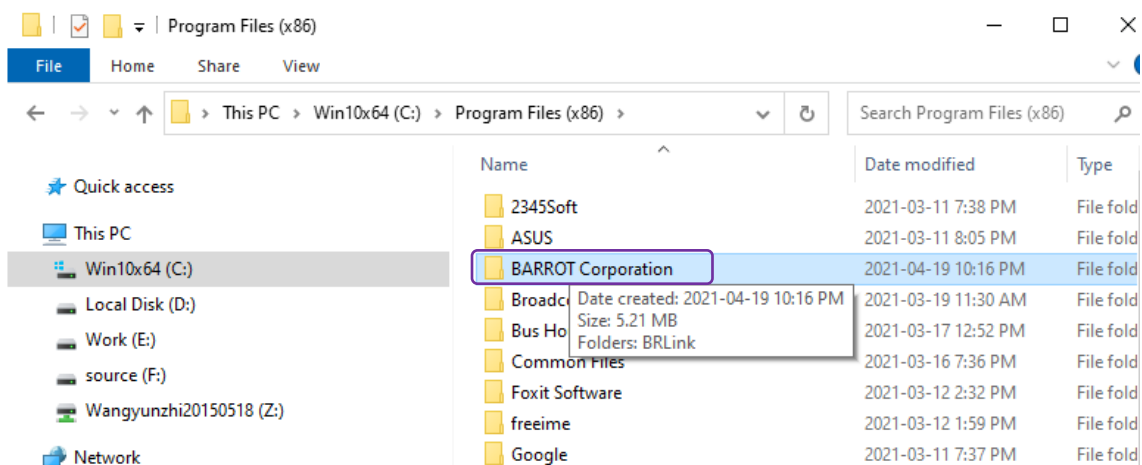


Figure 31 "Barrot Corporation" folder

- Double click "BRLinkTray.exe", start the BRLINK application.

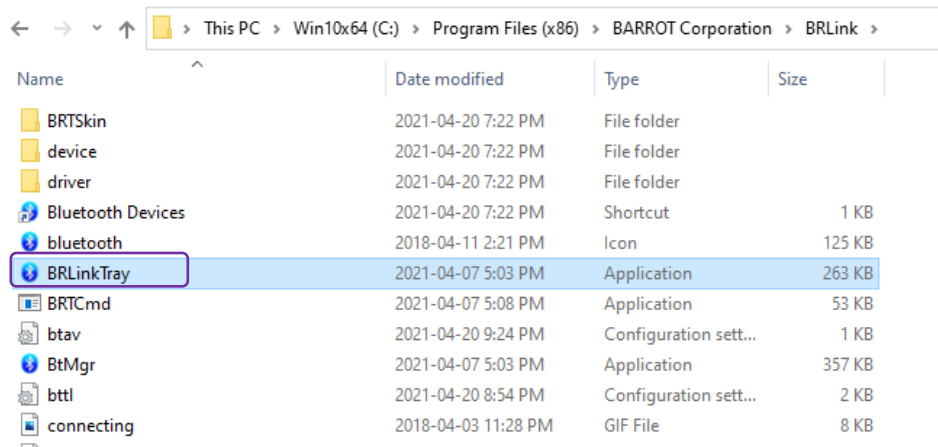


Figure 32 Start BRLink program

- Desktop status bar displays BRLink Bluetooth icon

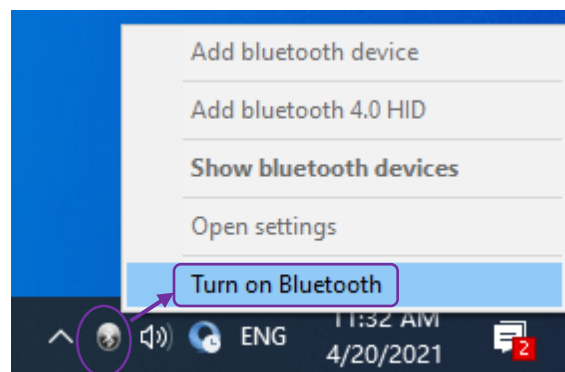


Figure 33 Bluetooth icon

5.4. conflict between bluetooth and bluetooth adapter built in the system

Since the WIN10 laptop has been equipped with the built-in Bluetooth driver at the factory, inserting the adapter will conflict with it. You can choose to disable the built-in Bluetooth first. The operation steps are as follows:

- Open “Computer Management” and find the built-in Bluetooth driver.

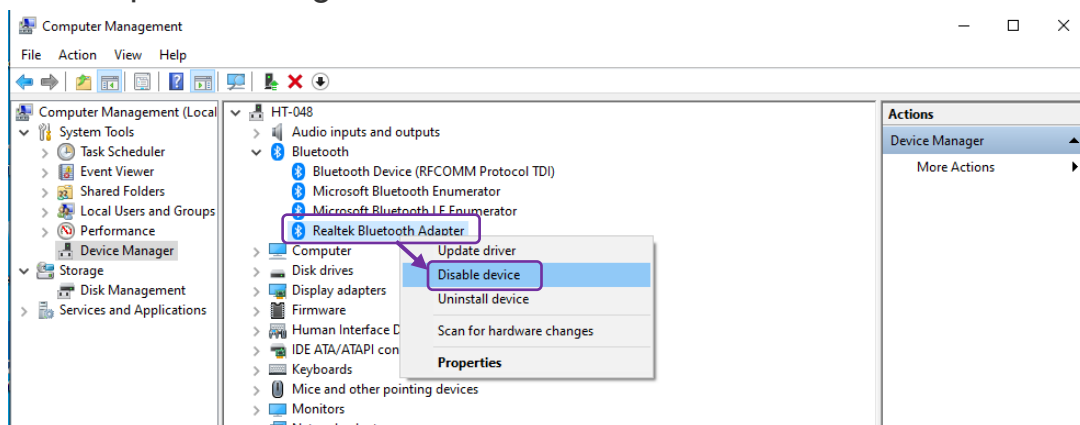


Figure 34 Device Manager

- Right-click Built-in Bluetooth Driver and select "Disable Device".

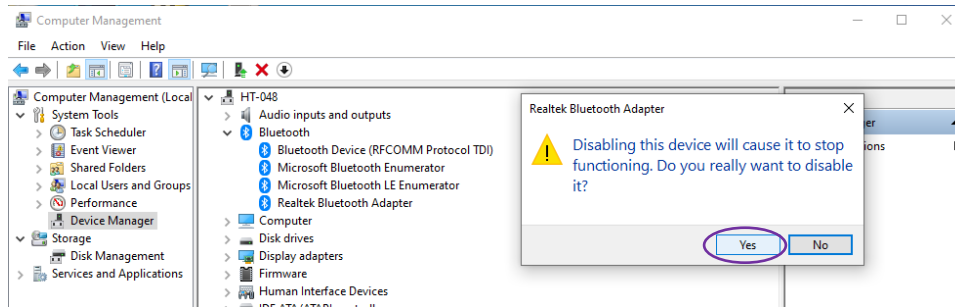


Figure 35 Disabling the built-in Bluetooth driver

- Built-in Bluetooth driver disabled successfully

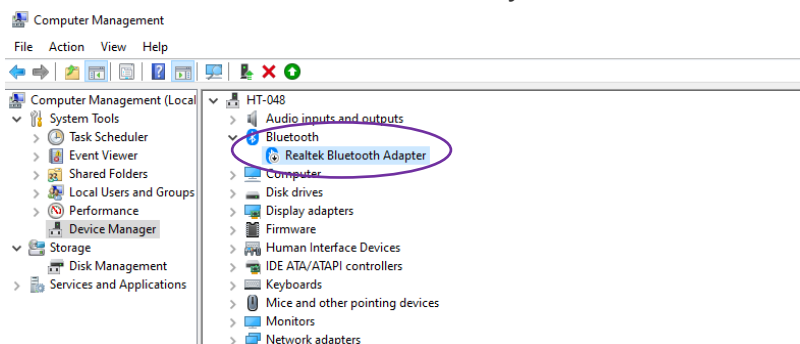


Figure 36 Disabled device successfully

5.5. After installing BRLink, resume using the system's own driver

The BRLink Bluetooth driver on the computer is switched to the Bluetooth driver on the Windows system. The operation steps are as follows:

- Right-click in the status bar at the bottom of the desktop and select "Task Manager" to find the BRLink application; Right-click the application and select End Task.

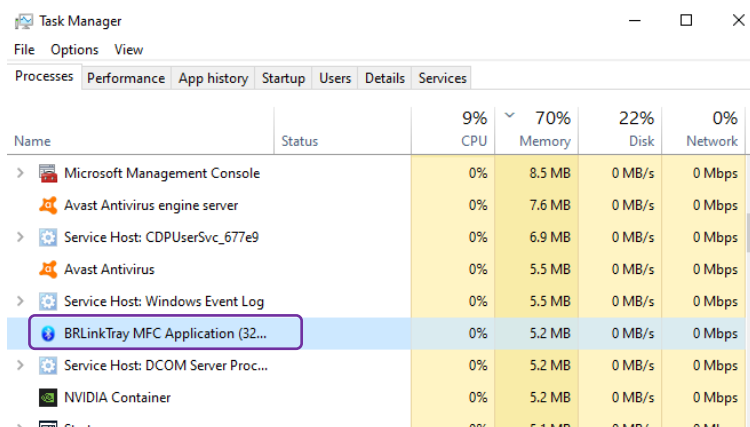


Figure 37 Ending BRLink Task

- Right-click the desktop "Start", select "Device Manager", and right-click "BRLink" Bluetooth driver in the "Universal Serial Bus Controllers" list.

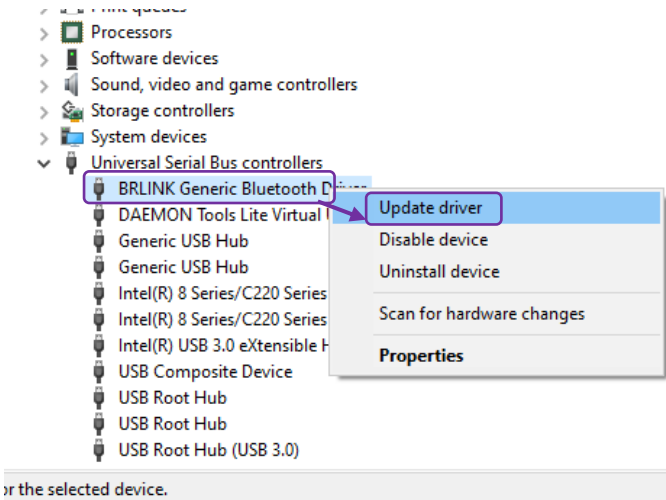


Figure 38 Device Manager Interface

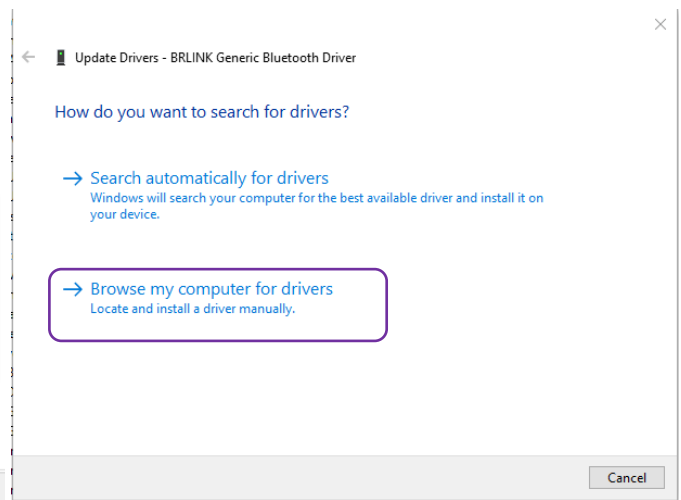


Figure 39 Select "Update Driver"

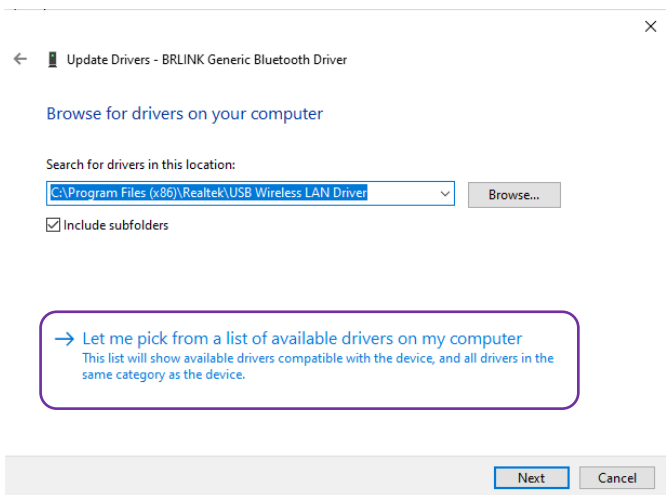


Figure 40 Selecting Device Drive Path

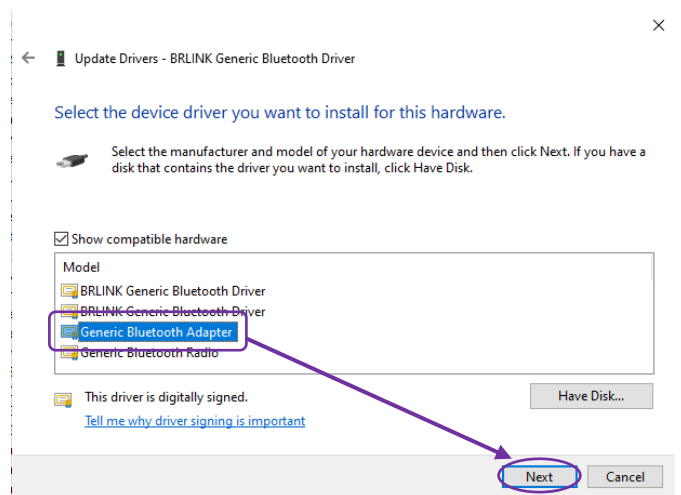


Figure 41 Setup program

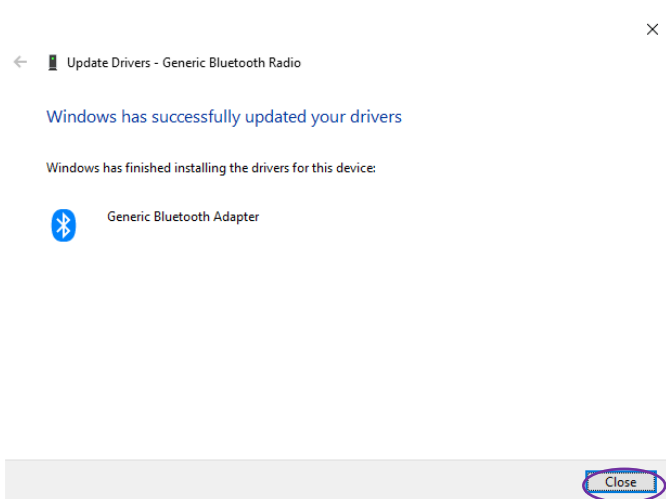
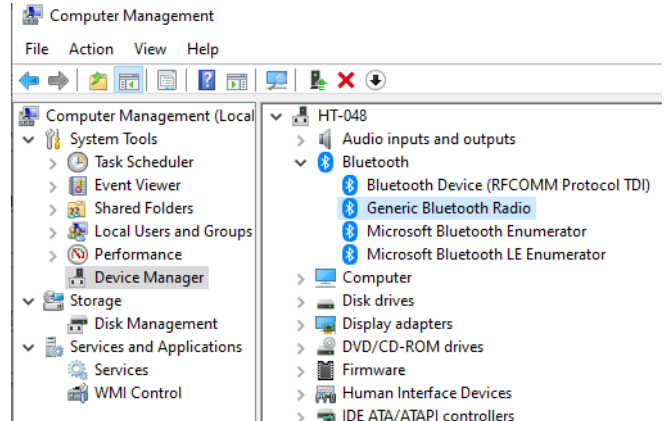


Figure 42 Drive Update Completed



- In the "services" list of "Computer management", restart the "Bluetooth Support Service" service.

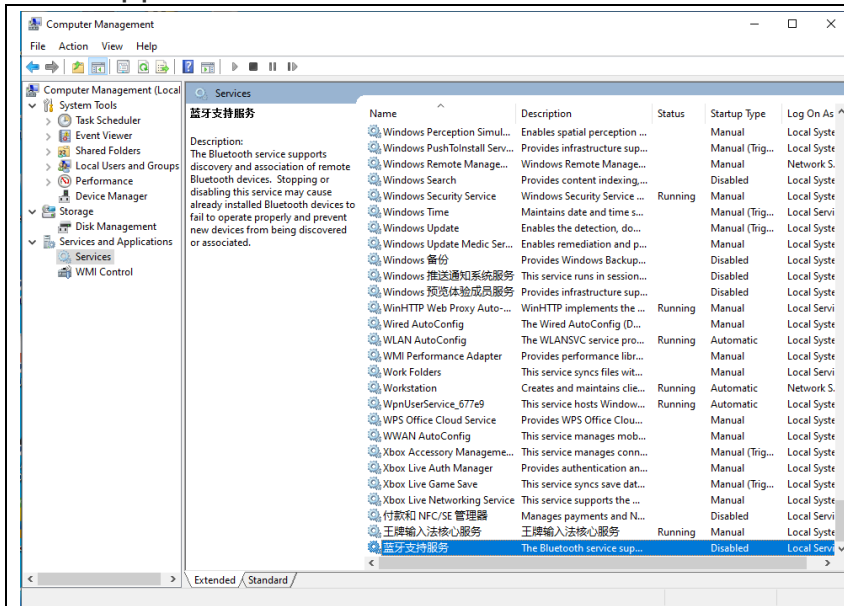


Figure 43 Device Manager-Service Interface

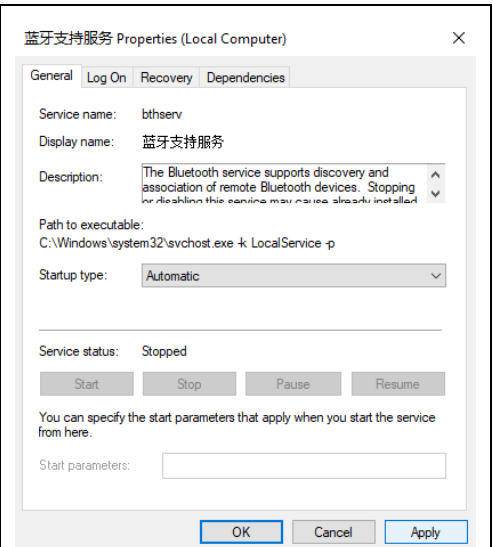


Figure 44 Restart the Bluetooth Support Service

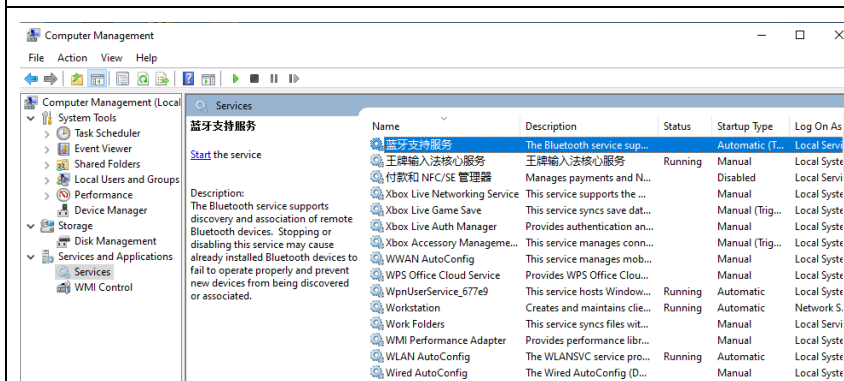


Figure 45 Successful restart of service

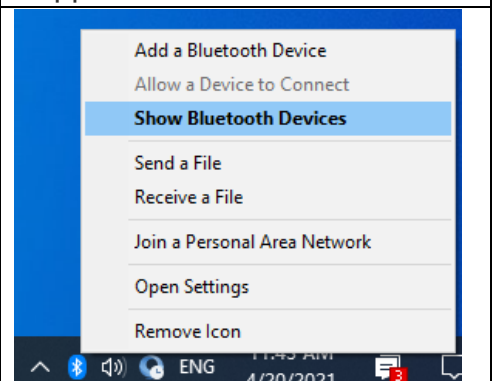


Figure 46 Bluetooth icon

- After the service is restarted successfully, the Bluetooth icon is displayed on the desktop status bar and can be used(Figure 46).