

Installation Guide

WiFi 7 BE6500 USB Wireless Adapter

1. Scan the QR code to download the driver program.
2. The downloaded file is a compressed file and needs to be decompressed. Select the corresponding system driver to install as the picture shows:

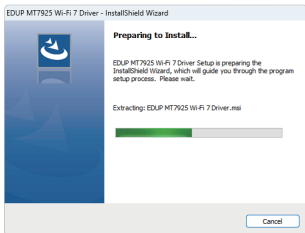
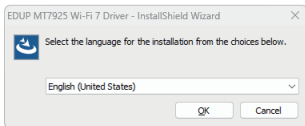


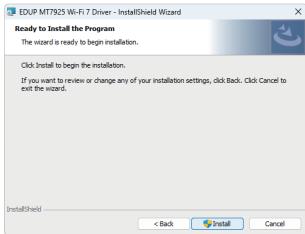
EP-BE1679

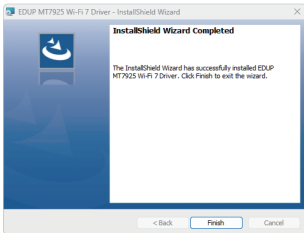
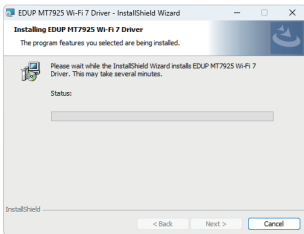


setup.exe

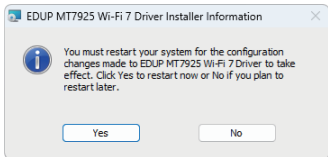
3. Click the **Install** button, wait for the software to install, and click the **Finish** button to complete the installation







4. Restart the computer after installation is complete



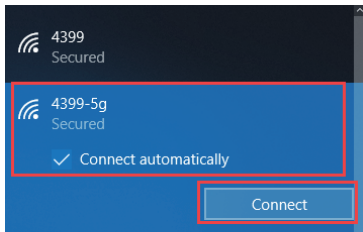
5. Connect wifi correctly then you can access to the Internet.


01. Open the Internet icon  at the lower right corner of the computer.

02. Searching and connecting the Wi-Fi you preferred on the detected Wi-Fi list.


03. Enter the Wi-Fi password to connect.

04. Finally you are connected to the Wi-Fi.




 4399-5g
Secured

Enter the network security key

.....| 

[Next](#) [Cancel](#)

 4399-5g
Connected, secured

[Properties](#)

[Disconnect](#)

Network Connection Problems

1. Slow or Unstable Internet

- Check that your network is on the **5GHz** band for better speed and reliability.
- Avoid placing the network adapter near walls or sources of magnetic interference.
- Try using a different USB port, especially one further from interference sources.

2. Adjust Router Settings

- Access your router's settings by entering 192.168.1.1 or 192.168.0.1 into your browser.
- In the router's admin page, adjust the channel and bandwidth settings to reduce interference. Choose less congested channels if possible.
- If the above troubleshooting steps don't resolve the issue, please contact our technical support for further assistance.